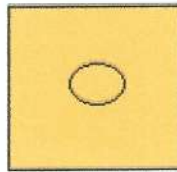
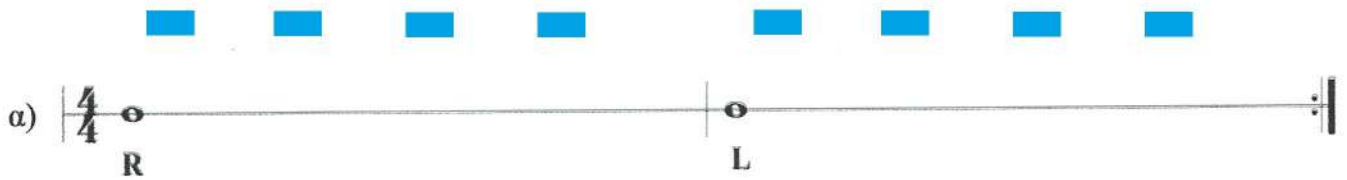
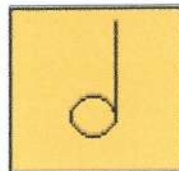


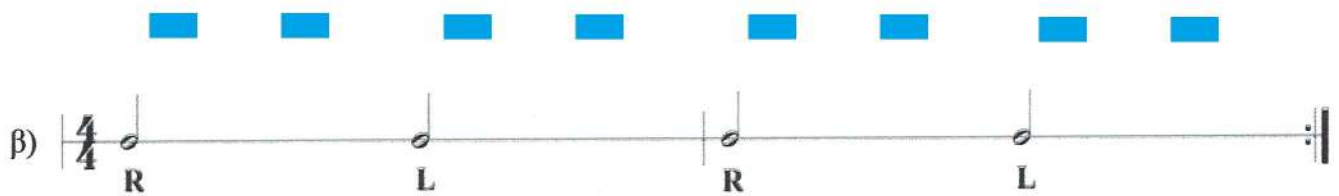
Ακολουθούν μερικά παραδείγματα με κάρτες:

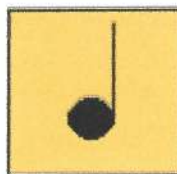


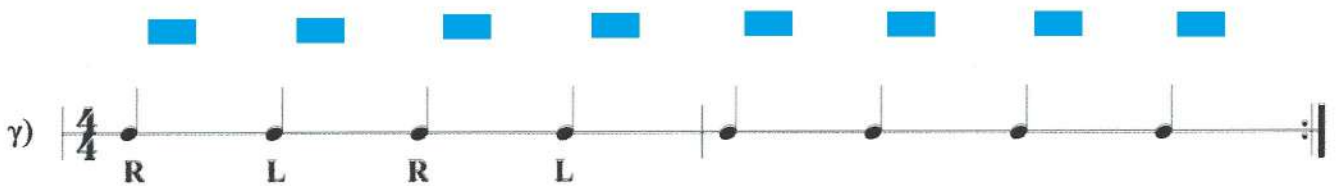
Μετράμε με τουβλάκια

α) 

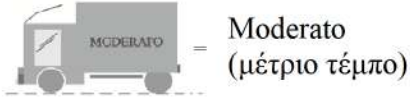
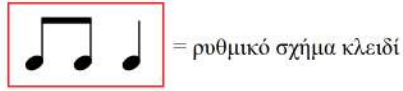


β) 



γ) 

ΔΕΙΓΜΑ ΠΑΡΤΙΤΟΥΡΑΣ ΓΙΑ ΜΑΘΗΤΕΣ/ΤΡΙΕΣ
ΜΕ ΜΑΘΗΣΙΑΚΕΣ ΔΥΣΚΟΛΙΕΣ - ΗΠΙΟ ΑΥΤΙΣΜΟ



Copyright by Antonis Giaroutzidis

① Drumset

Hi-hat
S.T.
S.D.
F.T.
B.D.

1 2 3 πάμε

1 κ 2 κ 3 κ 4 κ

Ρυθμός

α

= δείχνουμε με μία μπαγκέτα **f**

6

Drs.

β

Ride

γ

p **f**

12

Drs.

δ

Crash

= Κράτημα στο πιατί

Detailed description: This block contains three staves of drum notation for a drumset. The first staff is for the Hi-hat (S.T.), Snare Drum (S.D.), Floor Tom (F.T.), and Bass Drum (B.D.). It starts with a 4/4 time signature and a 'πάμε' (start) cue. The notation includes a sequence of 'κ' (kick) symbols and a rhythmic pattern labeled 'Ρυθμός'. A box labeled 'α' contains a musical notation for a specific rhythm. A green bar indicates a dynamic change from **f** to **p**. The second staff is for the Drums (Drs.), showing a sequence of 'κ' symbols and a 'Ride' pattern. A box labeled 'β' contains a musical notation for a specific rhythm. The third staff is for the Drums (Drs.), showing a sequence of 'κ' symbols and a 'Crash' pattern. A box labeled 'δ' contains a musical notation for a specific rhythm. A hand icon indicates a 'Κράτημα στο πιατί' (hold on the cymbal).

* Θα ήταν ωφέλιμο να αναζητήσετε περισσότερες πληροφορίες στο βιβλίο τα κρουστά των χρωμάτων